

Why Long-Term Care Costs are Increasing

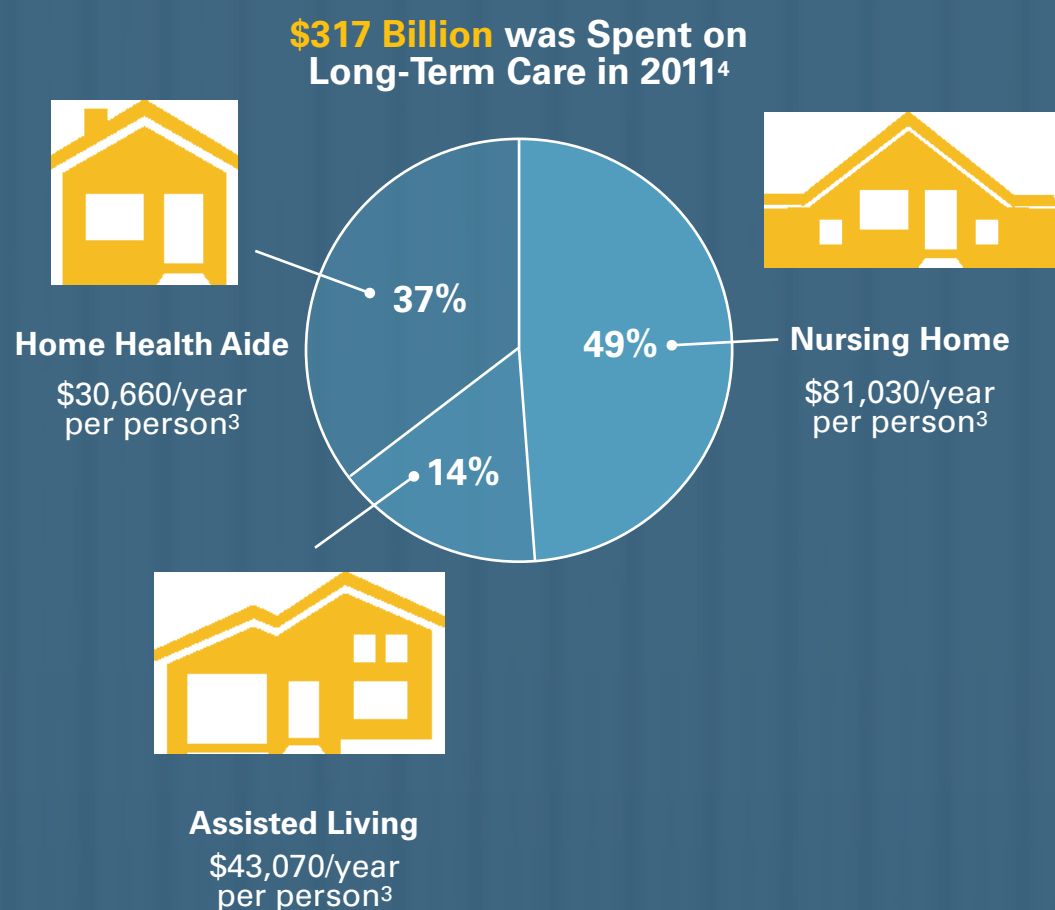
As Life Spans Increase, So Does the Prevalence of Chronic Conditions^{1,2}

People are living longer but not necessarily healthier. The demand for long-term care services increases as more people with chronic conditions require professional assistance with daily living.

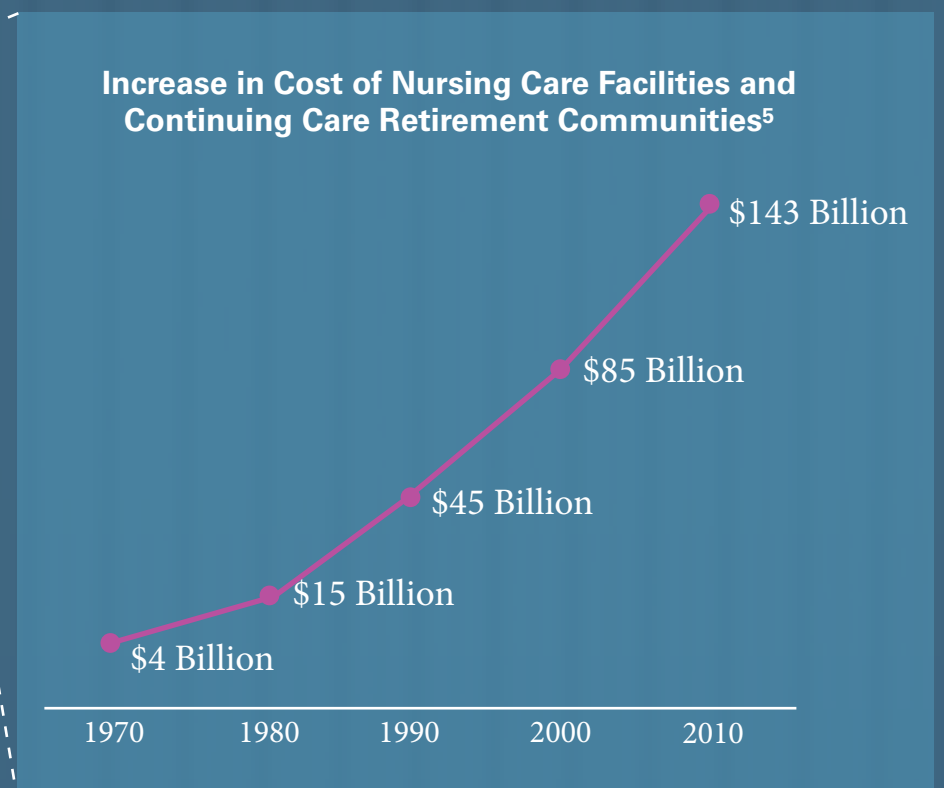


The average long-term care costs for Medicare participants with dementia are **\$43,847** per year; the cost of care for those without Alzheimer's or dementia is \$13,897 per year.²

Changing Preferences for How and Where People Receive Long-Term Care Impact Costs



Long-Term Care Costs have Increased as the Underlying Cost of Services have Increased



1 National Center for Health Statistics. (2012). Health, United States, 2011: With special feature on socioeconomic status and health. Hyattsville, MD

2 The Alzheimer's Association. 2012 Alzheimer's disease facts and figures.

3 Health Care Cost Institute. (2012, September). Health care cost and utilization report: 2011.

4 Testimony of Kirsten J. Colello Specialist in Health and Aging Policy Congressional Research Service Before the Commission on Long-Term Care, June 2013

5 Centers for Medicare and Medicaid Services, Office of the Actuary, National Health Statistics Group.